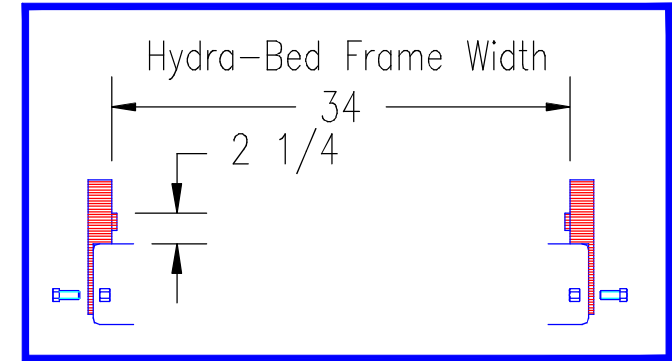


## GENERAL INSTRUCTIONS AND CAUTIONS

Note: When welding, attach welder ground only to Hydra-Bed, not to truck frame. Use low-hydrogen rod or wire electrode. NEVER weld to the frame of the truck. Correct installation of the Level-Lok system assures Front to Rear and Side to Side leveling as well as Left to Right centering of the Hydra-Bed. Never obstruct factory overload spring mounting locations.

When drilling truck frame, do not damage any part of the braking, fuel or electrical systems.

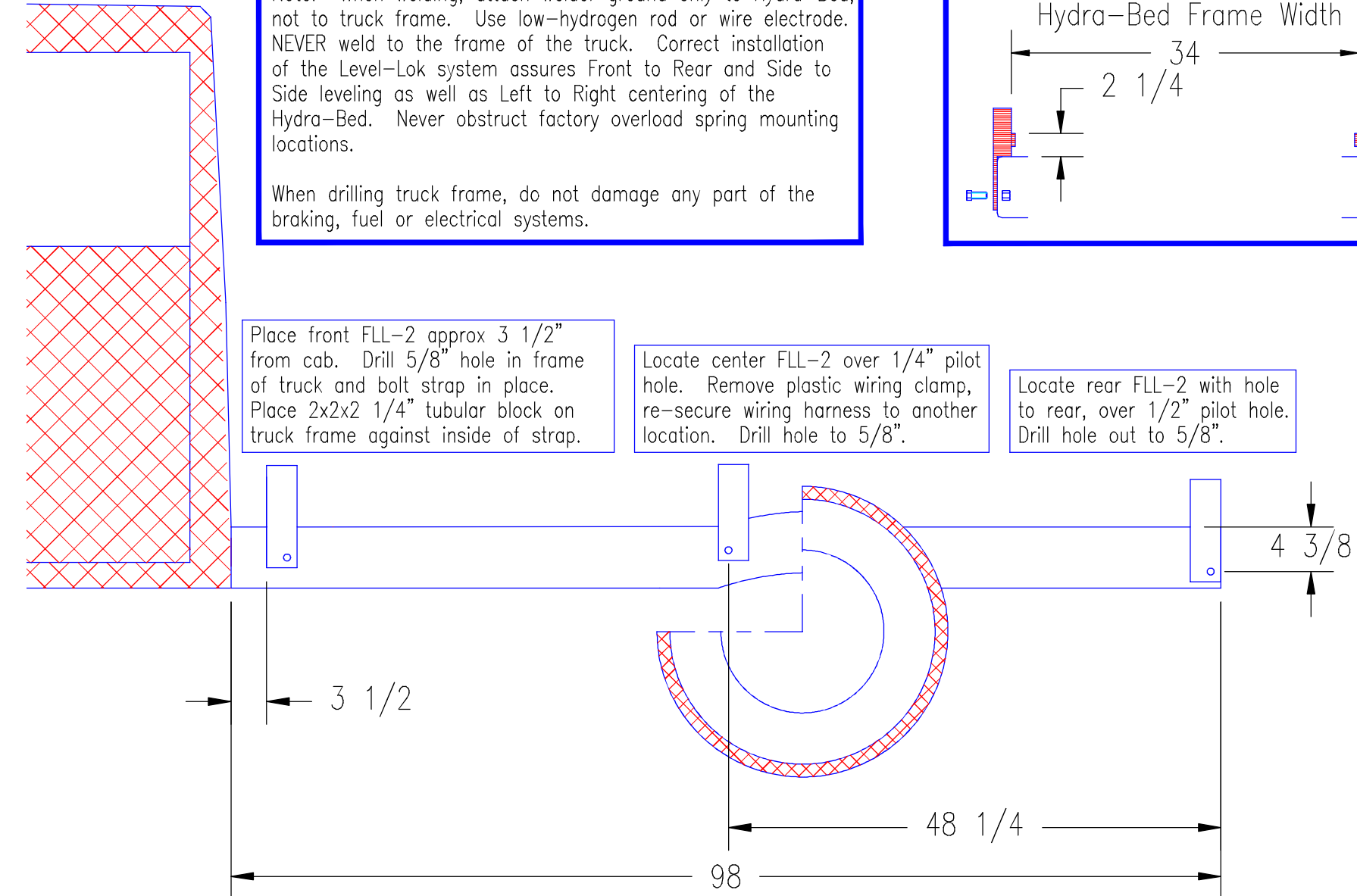
## VIEW OF REAR LEVEL-LOK ON TRUCK FRAME



Place front FLL-2 approx 3 1/2" from cab. Drill 5/8" hole in frame of truck and bolt strap in place. Place 2x2x2 1/4" tubular block on truck frame against inside of strap.

Locate center FLL-2 over 1/4" pilot hole. Remove plastic wiring clamp, re-secure wiring harness to another location. Drill hole to 5/8".

Locate rear FLL-2 with hole to rear, over 1/2" pilot hole. Drill hole out to 5/8".



FLL-2

1978-1979 Ford  
56" Cab to Axle Single/Dual Wheel